

# Development II (11/02/13)

## Development II (11/02/13)

### Summary

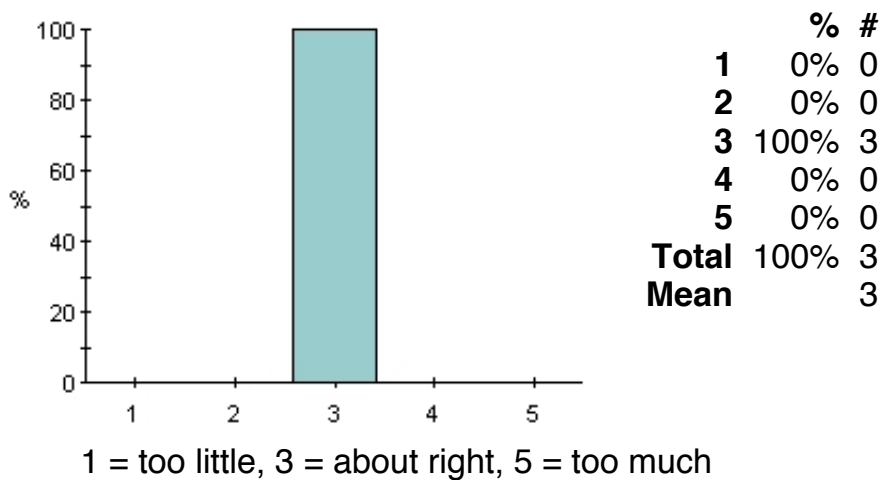
Total number of answers 3

Filter no

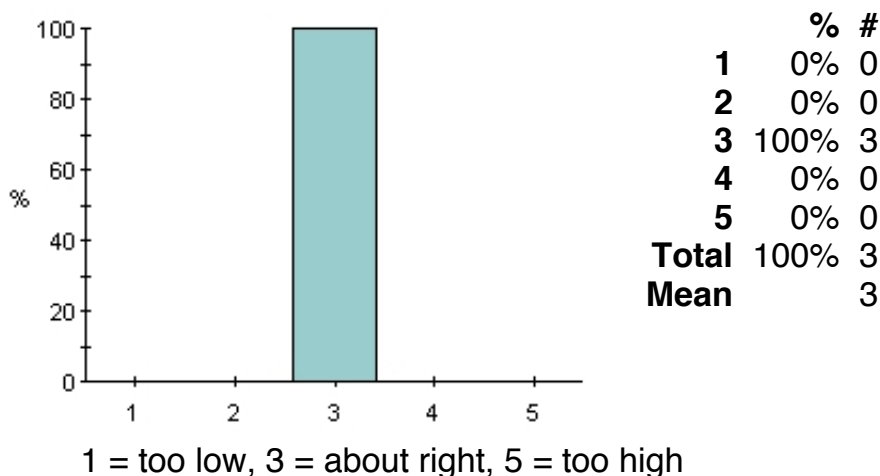
Group by question no

### 1. The course as a whole

#### (a) Amount of material covered

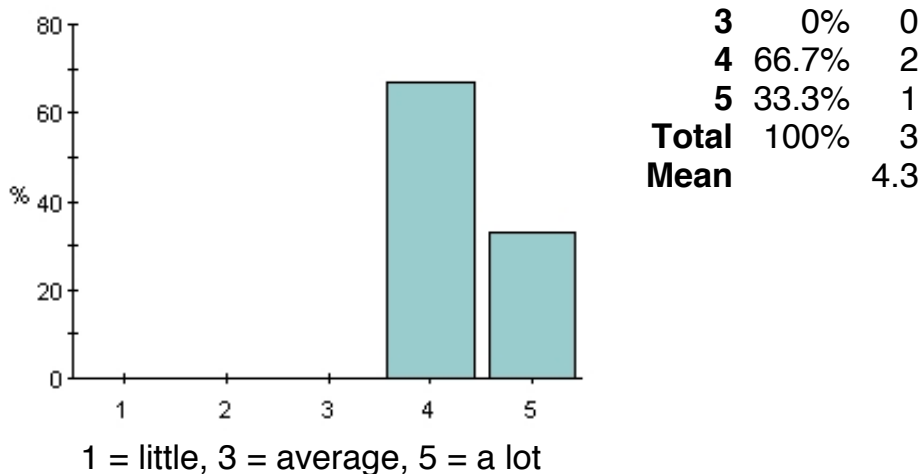


#### (b) Level of difficulty

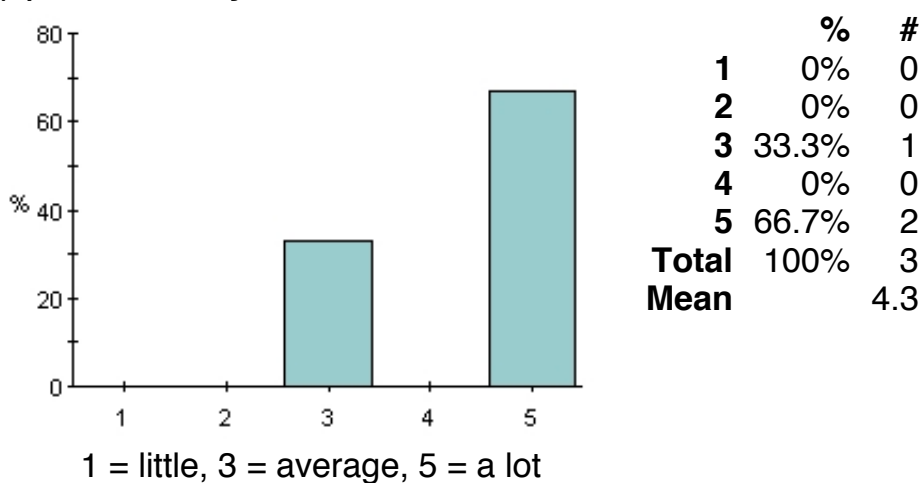


#### (c) What have you learned in terms of concepts, theories and models?

	%	#
1	0%	0
2	0%	0



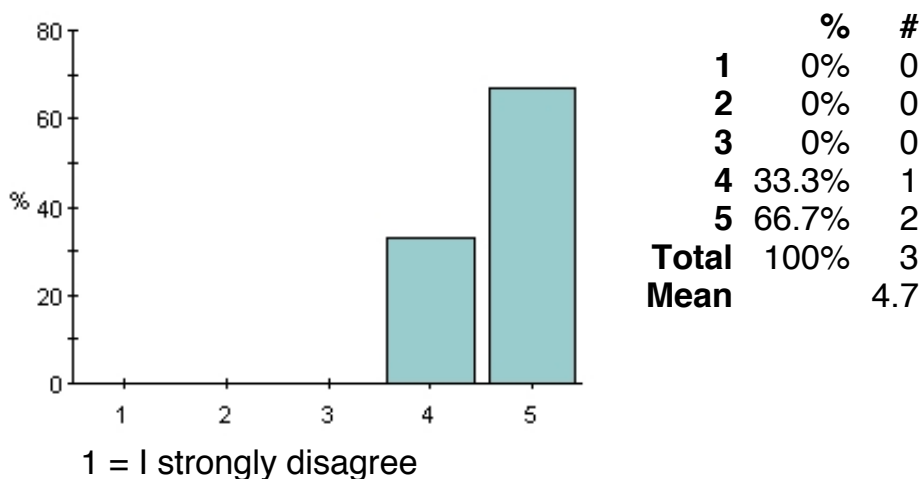
**(d) What have you learned in terms of tools and methods of analysis?**



**2. Teachers: Masayuki Kudamatsu, Konrad Burchardi, and Andreas Madestam**

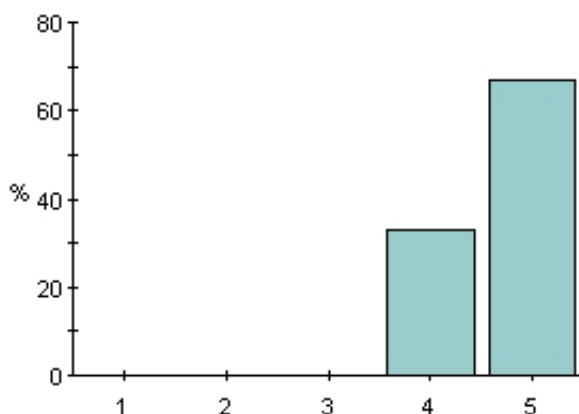
**(a)-(e): Please rate Masayuki Kudamatsu according to the statements given.**

**(a)The teacher explains clearly.**



3 = I neither agree nor disagree  
 5 = I strongly agree

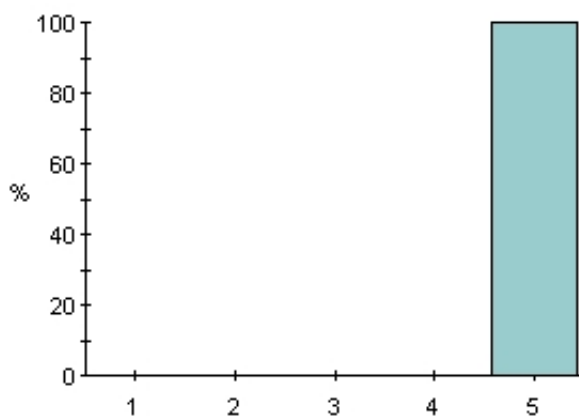
**(b) The teacher knows if students are following.**



	%	#
1	0%	0
2	0%	0
3	0%	0
4	33.3%	1
5	66.7%	2
<b>Total</b>	100%	3
<b>Mean</b>		4.7

1 = I strongly disagree  
 3 = I neither agree nor disagree  
 5 = I strongly agree

**(c) The teacher is well prepared.**

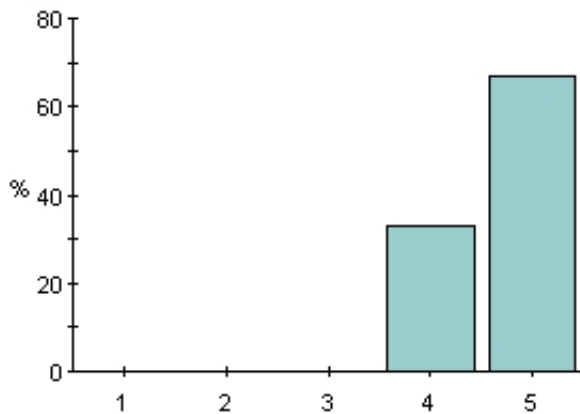


	%	#
1	0%	0
2	0%	0
3	0%	0
4	0%	0
5	100%	3
<b>Total</b>	100%	3
<b>Mean</b>		5

1 = I strongly disagree  
 3 = I neither agree nor disagree  
 5 = I strongly agree

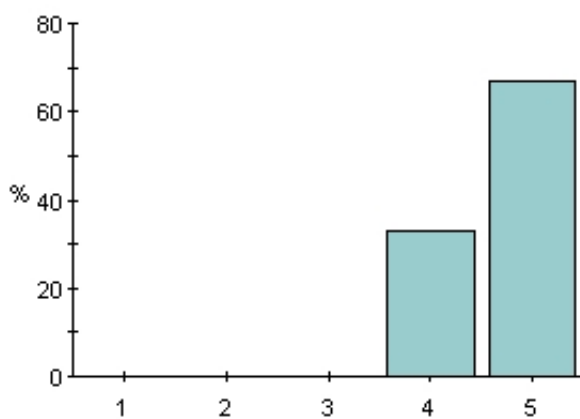
**(d) The teacher deepens the understanding of the literature.**

	%	#
1	0%	0
2	0%	0
3	0%	0
4	33.3%	1
5	66.7%	2
<b>Total</b>	100%	3
<b>Mean</b>		4.7



1 = I strongly disagree  
 3 = I neither agree nor disagree  
 5 = I strongly agree

**(e) In general, how would you rate this teacher?**

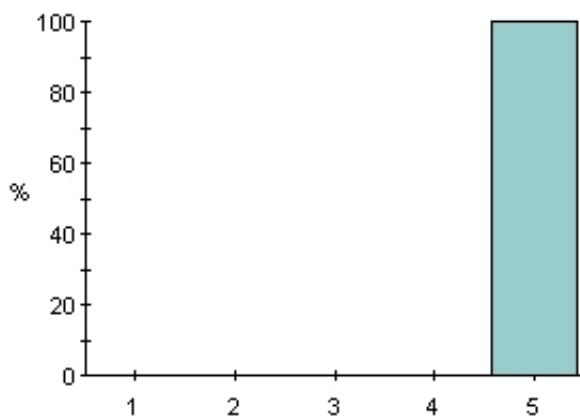


	%	#
1	0%	0
2	0%	0
3	0%	0
4	33.3%	1
5	66.7%	2
<b>Total</b>	<b>100%</b>	<b>3</b>
<b>Mean</b>		<b>4.7</b>

1 = poor, 3 = average, 5 = excellent

**(f)-(j): please rate Konrad Burchardi according to the statements given.**

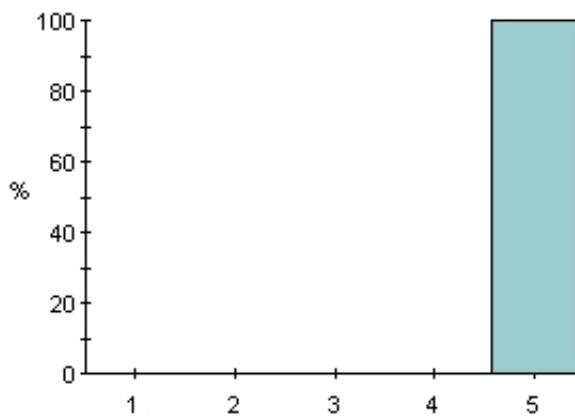
**(f) The teacher explains clearly.**



	%	#
1	0%	0
2	0%	0
3	0%	0
4	0%	0
5	100%	3
<b>Total</b>	<b>100%</b>	<b>3</b>
<b>Mean</b>		<b>5</b>

1 = I strongly disagree  
 3 = I neither agree nor disagree  
 5 = I strongly agree

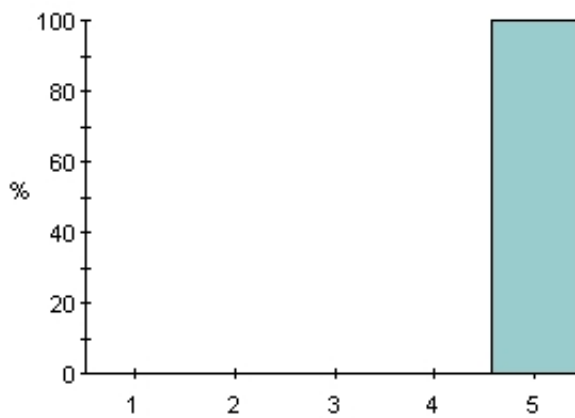
**(g)The teacher knows if students are following.**



	%	#
1	0%	0
2	0%	0
3	0%	0
4	0%	0
5	100%	3
<b>Total</b>	<b>100%</b>	<b>3</b>
<b>Mean</b>		<b>5</b>

1 = I strongly disagree  
 3 = I neither agree nor disagree  
 5 = I strongly agree

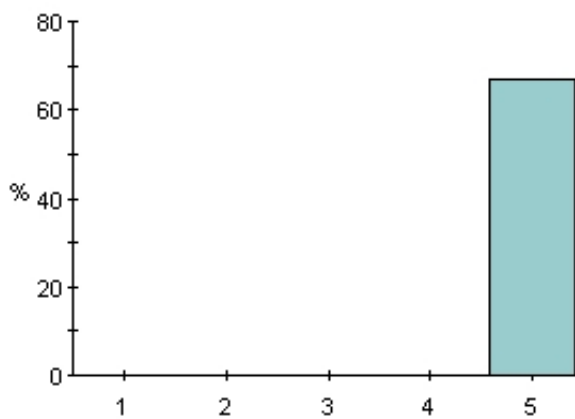
**(h)The teacher is well prepared.**



	%	#
1	0%	0
2	0%	0
3	0%	0
4	0%	0
5	100%	3
<b>Total</b>	<b>100%</b>	<b>3</b>
<b>Mean</b>		<b>5</b>

1 = I strongly disagree  
 3 = I neither agree nor disagree  
 5 = I strongly agree

**(i)The teacher deepens the understanding of the literature.**

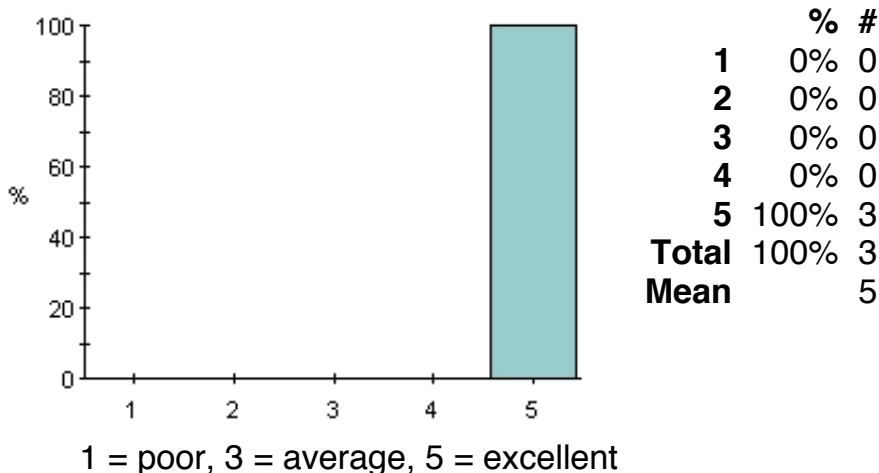


	%	#
1	0%	0
2	0%	0
3	0%	0
4	0%	0
5	66.7%	2
?	33.3%	1
<b>Total</b>	<b>100%</b>	<b>3</b>
<b>Mean</b>		<b>5</b>

1 = I strongly disagree

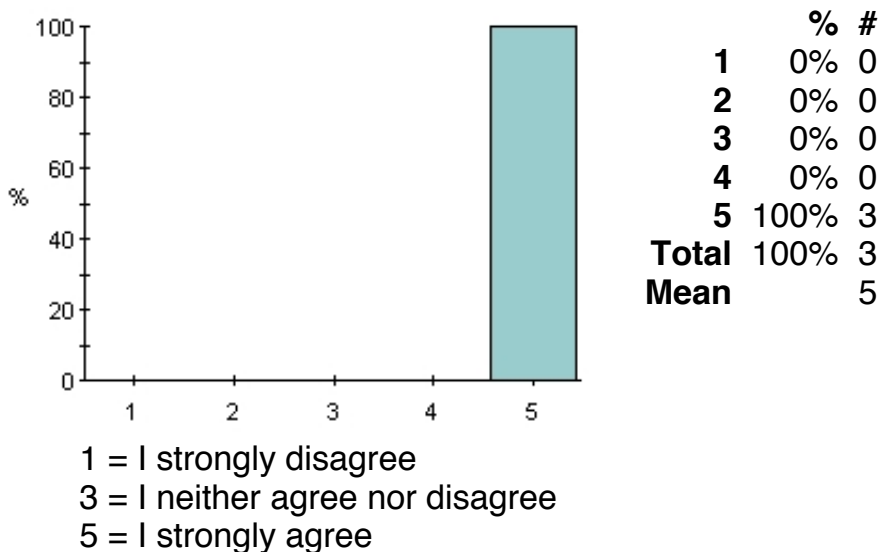
3 = I neither agree nor disagree  
 5 = I strongly agree

**(j) In general, how would you rate this teacher?**



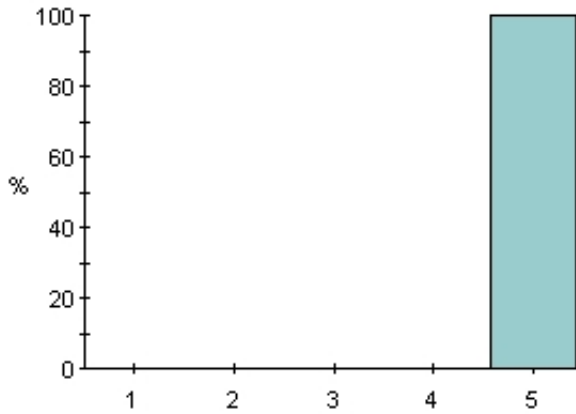
**(k)-(o): please rate Andreas Madestam according to the statements given.**

**(k) The teacher explains clearly.**



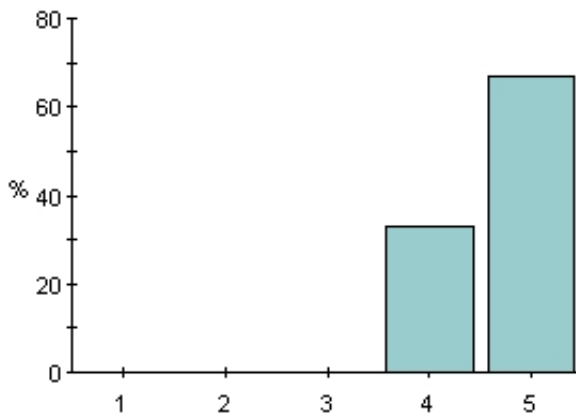
**(l) The teacher knows if students are following.**

Rating	%	#
1	0%	0
2	0%	0
3	0%	0
4	0%	0
5	100%	3
<b>Total</b>	<b>100%</b>	<b>3</b>
<b>Mean</b>		<b>5</b>



1 = I strongly disagree  
 3 = I neither agree nor disagree  
 5 = I strongly agree

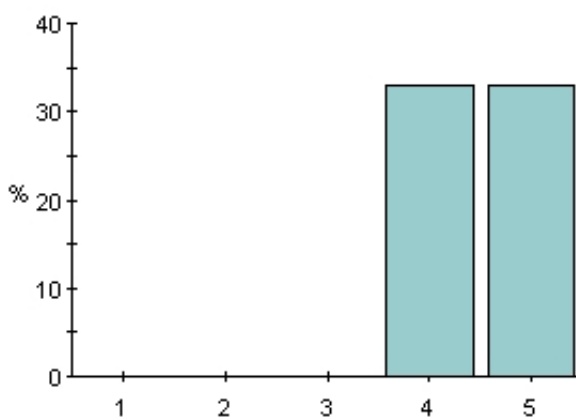
**(m)The teacher is well prepared.**



	%	#
1	0%	0
2	0%	0
3	0%	0
4	33.3%	1
5	66.7%	2
<b>Total</b>	100%	3
<b>Mean</b>		4.7

1 = I strongly disagree  
 3 = I neither agree nor disagree  
 5 = I strongly agree

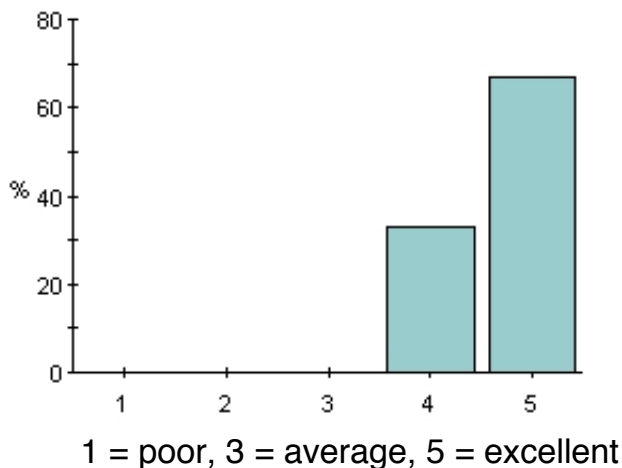
**(n)The teacher deepens the understanding of the literature.**



	%	#
1	0%	0
2	0%	0
3	0%	0
4	33.3%	1
5	33.3%	1
?	33.3%	1
<b>Total</b>	100%	3
<b>Mean</b>		4.5

1 = I strongly disagree  
 3 = I neither agree nor disagree  
 5 = I strongly agree

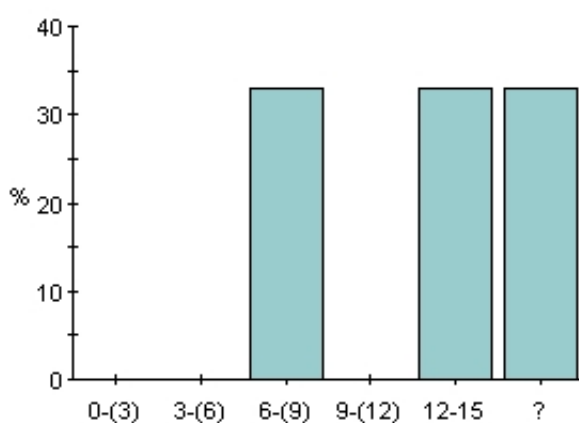
**(c) In general, how would you rate this teacher?**



	%	#
1	0%	0
2	0%	0
3	0%	0
4	33.3%	1
5	66.7%	2
<b>Total</b>	<b>100%</b>	<b>3</b>
<b>Mean</b>		<b>4.7</b>

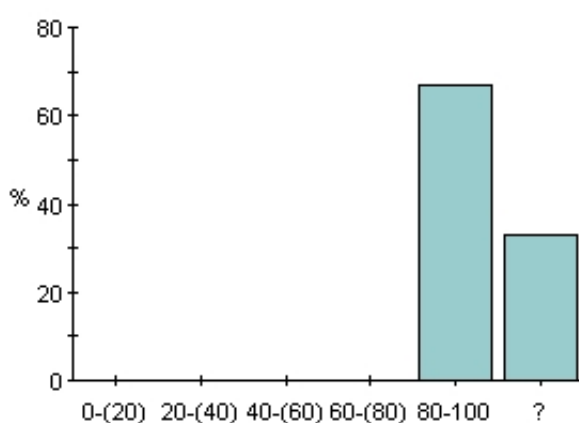
**3. Your own work**

**(a) On average, how many hours did you spend on the course (including lectures) each week?**



	%	#
0-(3)	0%	0
3-(6)	0%	0
6-(9)	33.3%	1
9-(12)	0%	0
12-15	33.3%	1
?	33.3%	1
<b>Total</b>	<b>100%</b>	<b>3</b>
<b>Mean</b>		<b>10.5</b>

**(b) What percentage of lectures did you attend?**



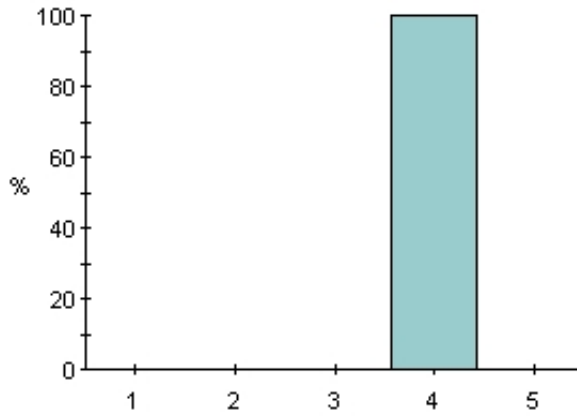
	%	#
0-(20)	0%	0
20-(40)	0%	0
40-(60)	0%	0
60-(80)	0%	0
80-100	66.7%	2
?	33.3%	1
<b>Total</b>	<b>100%</b>	<b>3</b>
<b>Mean</b>		<b>95</b>

**4. Reading list**

**(a) How much of the required readings on the reading list have you**



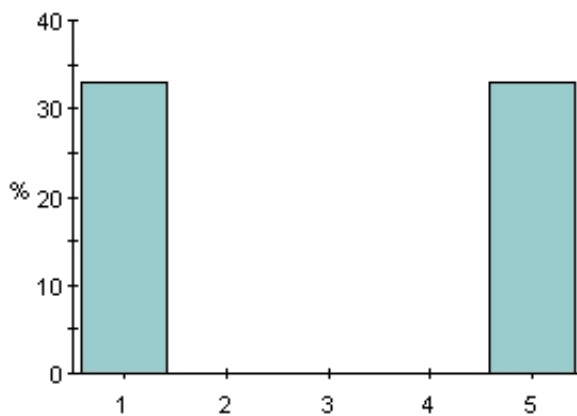
**read?**



	%	#
1	0%	0
2	0%	0
3	0%	0
4	100%	3
5	0%	0
<b>Total</b>	<b>100%</b>	<b>3</b>
<b>Mean</b>		<b>4</b>

1 = none, 3 = about half, 5 = all

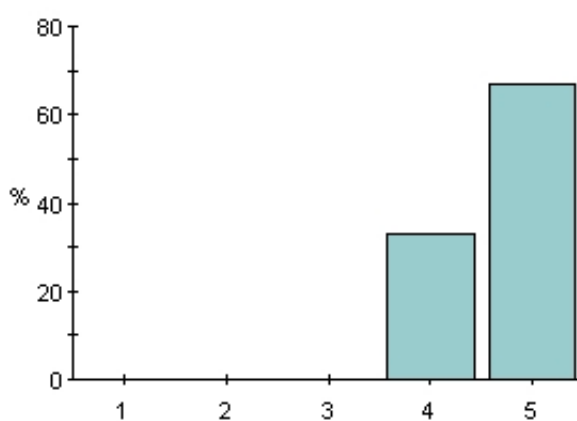
**(b) How would you rate the books recommended for this course?**



	%	#
1	33.3%	1
2	0%	0
3	0%	0
4	0%	0
5	33.3%	1
?	33.3%	1
<b>Total</b>	<b>100%</b>	<b>3</b>
<b>Mean</b>		<b>3</b>

1 = not useful, 3 = fairly useful, 5 = very useful

**(c) How would you rate the articles recommended for this course?**



	%	#
1	0%	0
2	0%	0
3	0%	0
4	33.3%	1
5	66.7%	2
<b>Total</b>	<b>100%</b>	<b>3</b>
<b>Mean</b>		<b>4.7</b>

1 = not useful, 3 = fairly useful, 5 = very useful

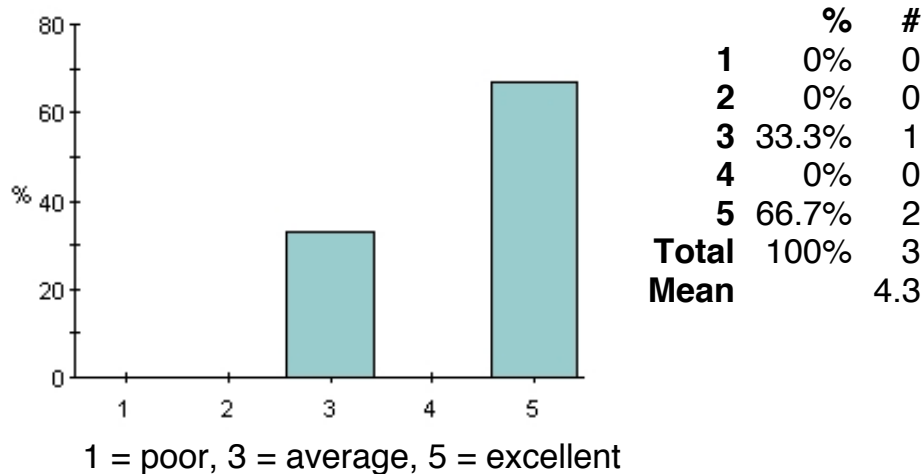
#### (d) Other comments/suggestions about the course literature/reading list:

One has answered this question

— I thought the reading list was really carefully thought out. It really helped to know what was emphasized ahead of time. The empirical articles really taught some detailed methods.

### 5. General judgement

#### (a) How would you rate this course as a whole?



#### 6. Other comments or suggestions:

3 have answered this question

- More discussions!
- Great course! I got from the course what I needed, tools and ideas for my future research! Very happy to have taken the course and the professors all well prepared.
- I felt like this was a very helpful, well-structured course. I'd actually suggest more referee reports perhaps, but I know that is much work for profs.

---

**Contact person:** Nathan Lane, [courseeval@ne.su.se](mailto:courseeval@ne.su.se)

**Last modified:** 04/03/13