

## Topics in Macroeconomics Q2 09/10

### Topics in Macroeconomics Q2 09/10

#### Summary

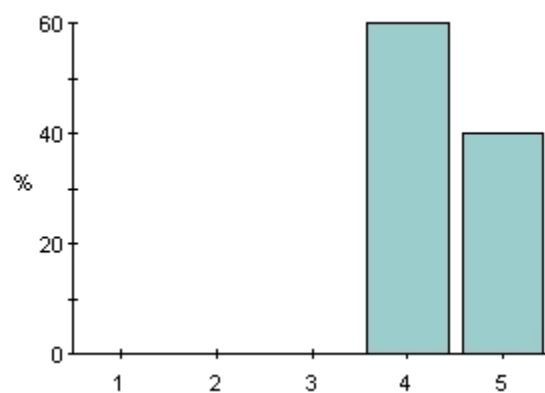
Total number of answers 5

Filter no

Group by question no

#### 1. The course as a whole

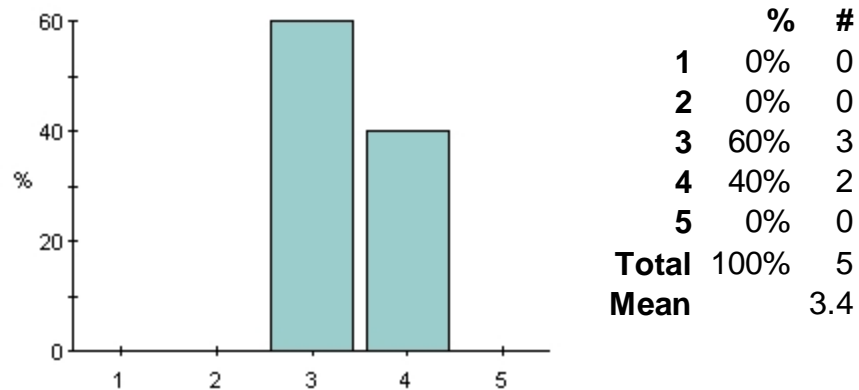
##### (a) Amount of material covered



	%	#
1	0%	0
2	0%	0
3	0%	0
4	60%	3
5	40%	2
<b>Total</b>	100%	5
<b>Mean</b>		4.4

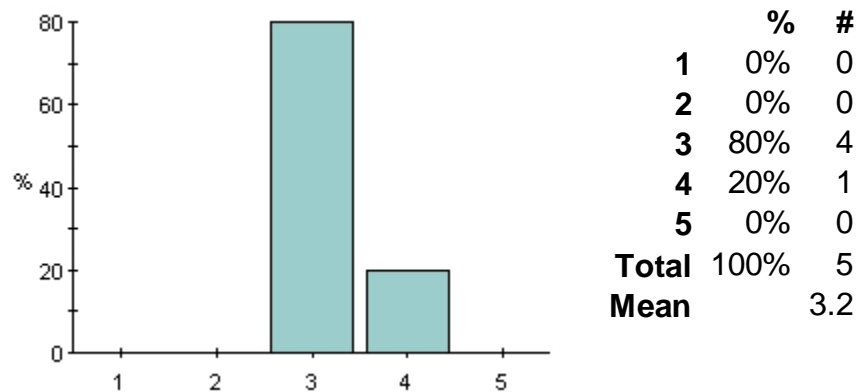
1 = too little  
3 = about right  
5 = too much

##### (b) Level of difficulty



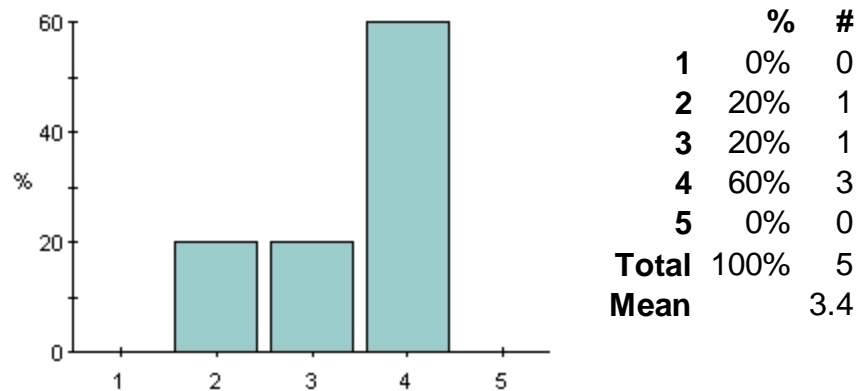
1 = too low  
 3 = about right  
 5 = too high

**(c) What have you learned in terms of concepts, theories and models?**



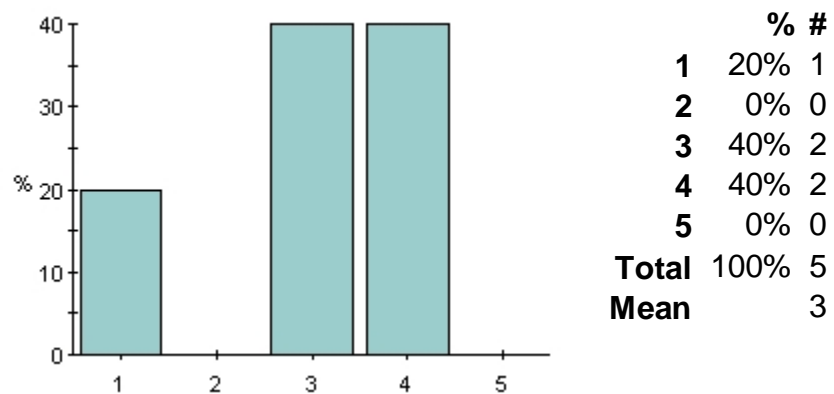
1 = little  
 3 = average  
 5 = a lot

**(d) What have you learned in terms of tools and methods of analysis?**



1 = little  
 3 = average  
 5 = a lot

**(e) What have you learned in terms of ideas for research?**



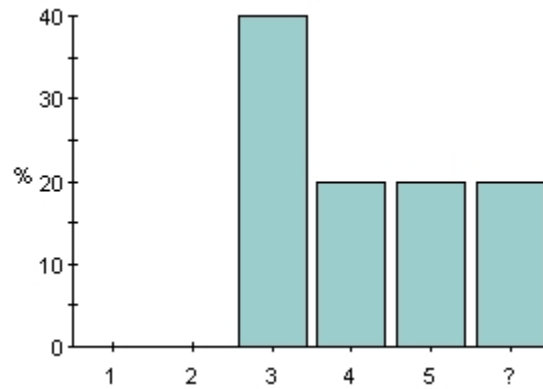
1 = little  
 3 = average  
 5 = a lot

**2. Teachers: Almut Balleer and Tobias Broer**

Questions 2 (a)-(d): please rate Almut Balleer according to the

statements given.

**(a) The teacher explains clearly.**



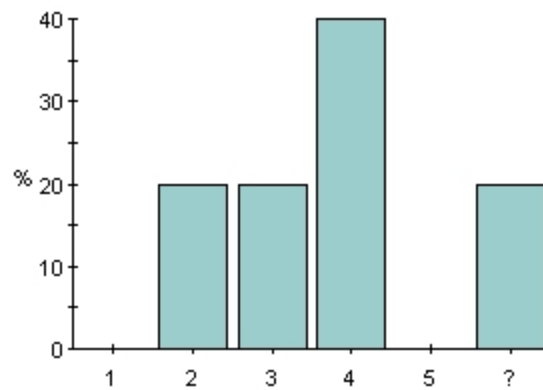
	%	#
1	0%	0
2	0%	0
3	40%	2
4	20%	1
5	20%	1
?	20%	1
<b>Total</b>	<b>100%</b>	<b>5</b>
<b>Mean</b>		<b>3.8</b>

1 = I strongly disagree

3 = I neither agree nor disagree

5 = I strongly agree

**(b) The teacher knows if students are following.**



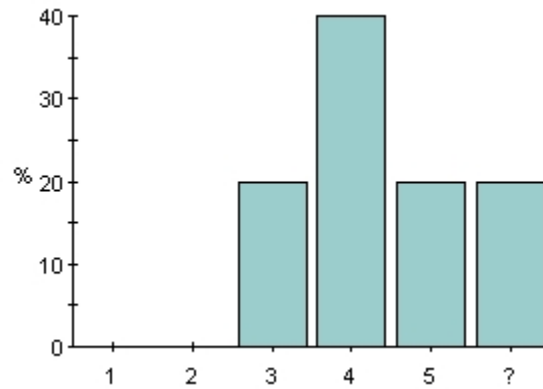
	%	#
1	0%	0
2	20%	1
3	20%	1
4	40%	2
5	0%	0
?	20%	1
<b>Total</b>	<b>100%</b>	<b>5</b>
<b>Mean</b>		<b>3.2</b>

1 = I strongly disagree

3 = I neither agree nor disagree

5 = I strongly agree

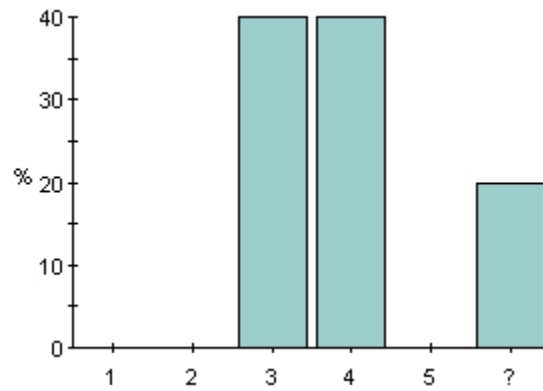
**(c) The teacher is well prepared.**



	%	#
1	0%	0
2	0%	0
3	20%	1
4	40%	2
5	20%	1
?	20%	1
<b>Total</b>	<b>100%</b>	<b>5</b>
<b>Mean</b>		<b>4</b>

1 = I strongly disagree  
 3 = I neither agree nor disagree  
 5 = I strongly agree

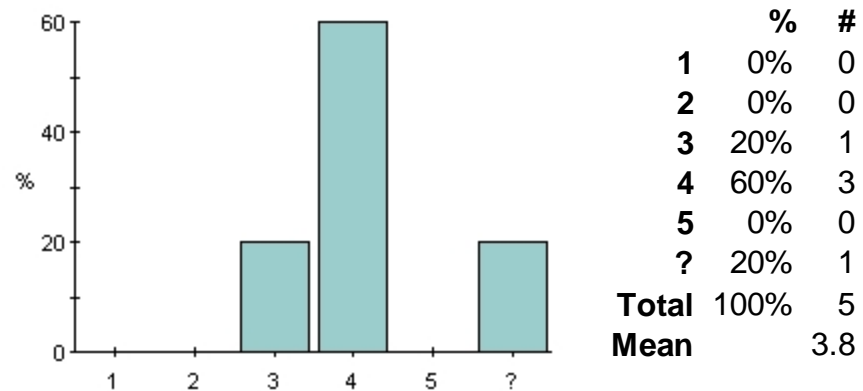
**(d) The teacher deepens the understanding of the literature.**



	%	#
1	0%	0
2	0%	0
3	40%	2
4	40%	2
5	0%	0
?	20%	1
<b>Total</b>	<b>100%</b>	<b>5</b>
<b>Mean</b>		<b>3.5</b>

1 = I strongly disagree  
 3 = I neither agree nor disagree  
 5 = I strongly agree

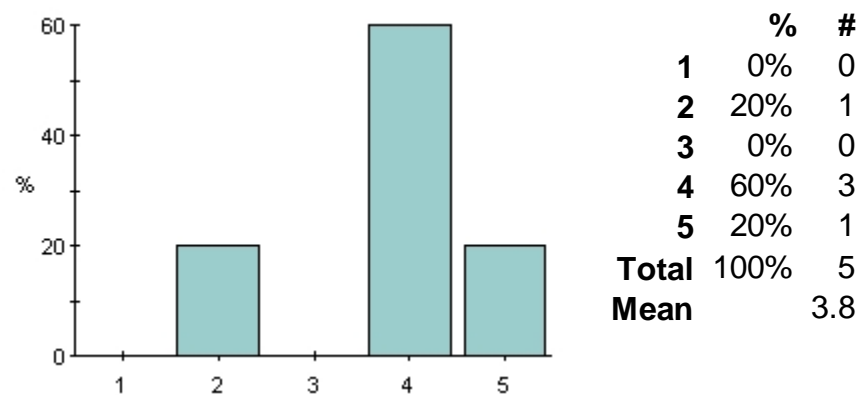
**(e) In general, how would you rate this teacher?**



1 = poor  
 3 = average  
 5 = excellent

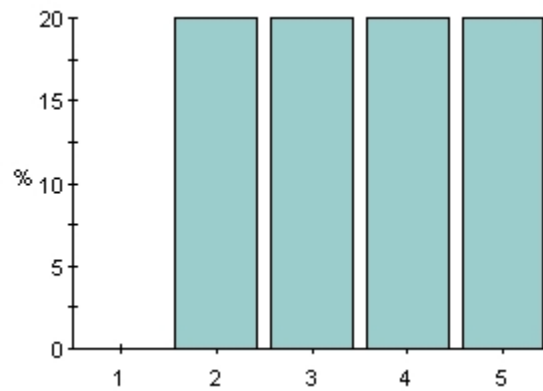
Questions 2 (f)-(i): please rate Tobias Broer according to the statements given.

**(f) The teacher explains clearly.**



1 = I strongly disagree  
 3 = I neither agree nor disagree  
 5 = I strongly agree

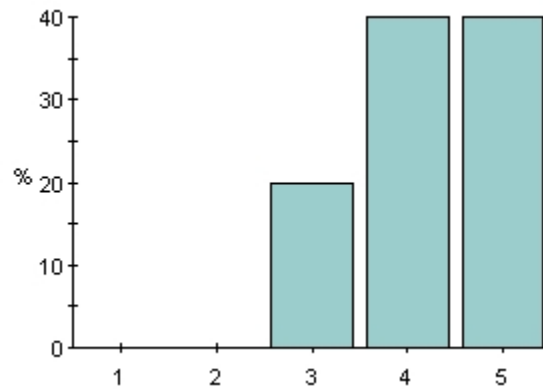
**(g) The teacher knows if students are following.**



	%	#
1	0%	0
2	20%	1
3	20%	1
4	20%	1
5	20%	1
?	20%	1
<b>Total</b>	<b>100%</b>	<b>5</b>
<b>Mean</b>		<b>3.5</b>

1 = I strongly disagree  
 3 = I neither agree nor disagree  
 5 = I strongly agree

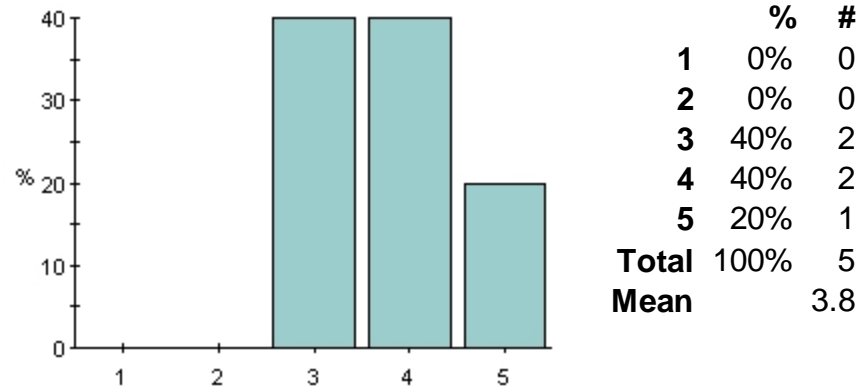
**(h) The teacher is well prepared.**



	%	#
1	0%	0
2	0%	0
3	20%	1
4	40%	2
5	40%	2
<b>Total</b>	<b>100%</b>	<b>5</b>
<b>Mean</b>		<b>4.2</b>

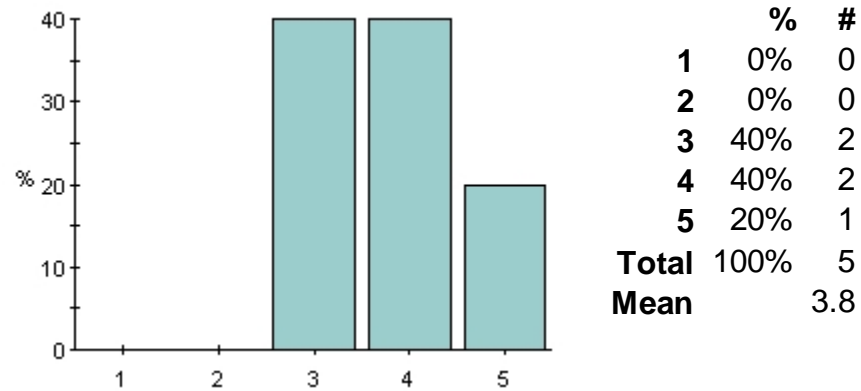
1 = I strongly disagree  
 3 = I neither agree nor disagree  
 5 = I strongly agree

**(i) The teacher deepens the understanding of the literature.**



1 = I strongly disagree  
 3 = I neither agree nor disagree  
 5 = I strongly agree

**(j) In general, how would you rate this teacher?**

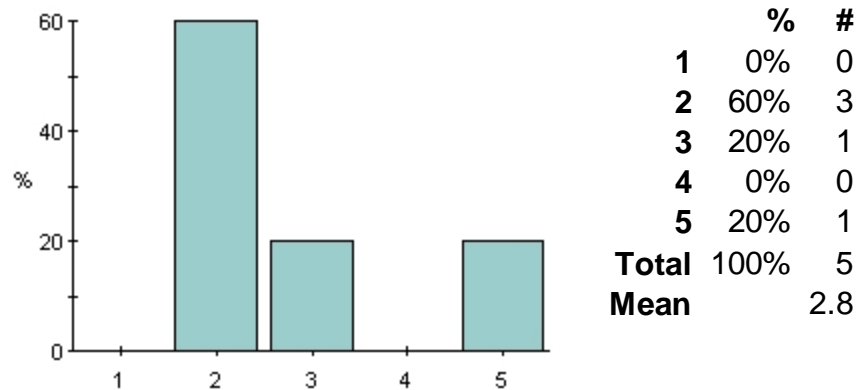


1 = poor  
 3 = average  
 5 = excellent

**4. Problem sets**

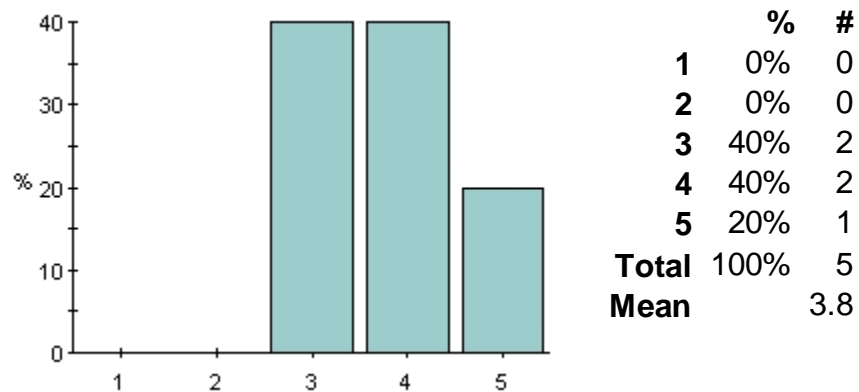
**(a) General judgment: the problem sets were:**





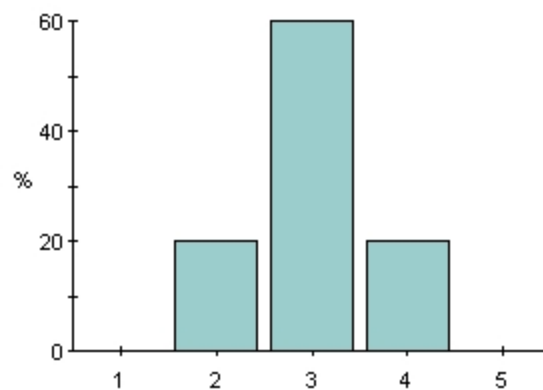
1 = not useful  
 3 = fairly useful  
 5 = very useful

**(b) The time it took to solve the problem sets was:**



1 = too short  
 3 = about right  
 5 = too long

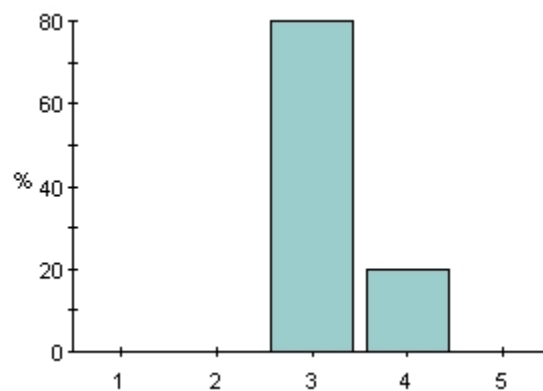
**(c) The number of problem sets was:**



	%	#
1	0%	0
2	20%	1
3	60%	3
4	20%	1
5	0%	0
<b>Total</b>	<b>100%</b>	<b>5</b>
<b>Mean</b>		<b>3</b>

1 = too low  
 3 = about right  
 5 = too high

**(d) The level of difficulty was:**



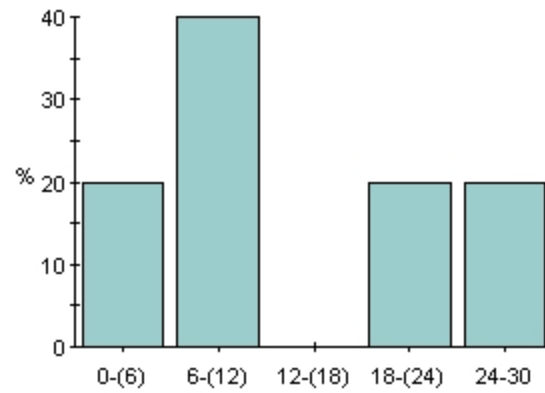
	%	#
1	0%	0
2	0%	0
3	80%	4
4	20%	1
5	0%	0
<b>Total</b>	<b>100%</b>	<b>5</b>
<b>Mean</b>		<b>3.2</b>

1 = too low  
 3 = about right  
 5 = too high

**5. Your own work**

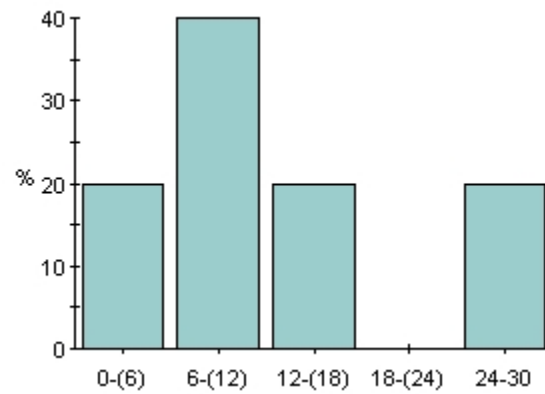
**(a) On average, how many hours did you spend on the course**

**(including lectures) each week?**



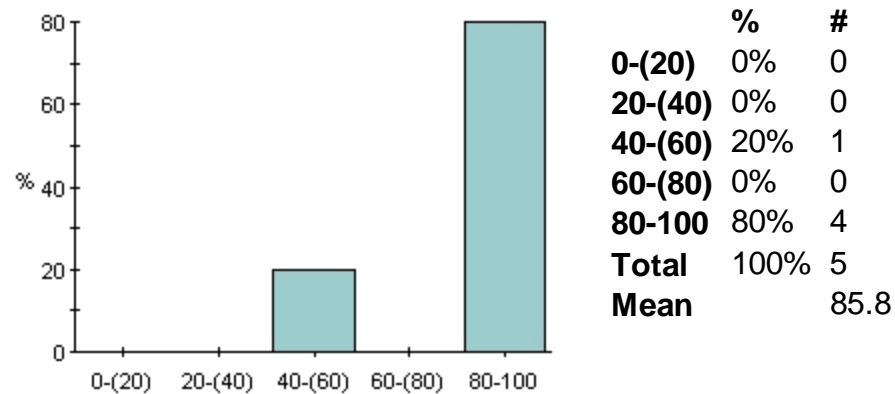
	%	#
<b>0-(6)</b>	20%	1
<b>6-(12)</b>	40%	2
<b>12-(18)</b>	0%	0
<b>18-(24)</b>	20%	1
<b>24-30</b>	20%	1
<b>Total</b>	100%	5
<b>Mean</b>		14.6

**(b) On average, how many hours did you spend on each problem set?**



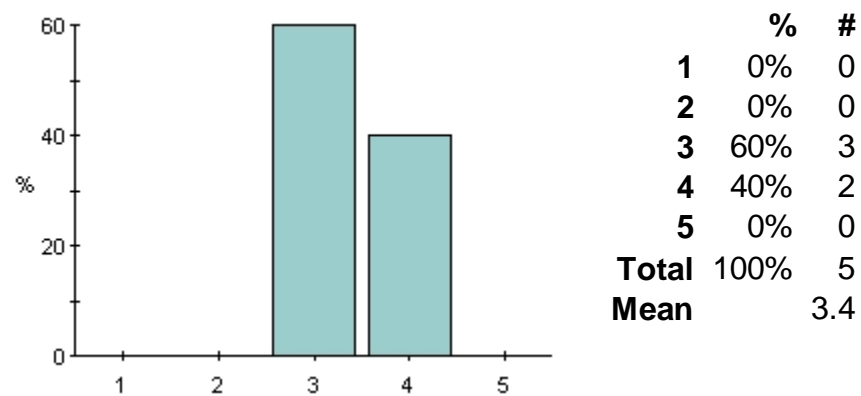
	%	#
<b>0-(6)</b>	20%	1
<b>6-(12)</b>	40%	2
<b>12-(18)</b>	20%	1
<b>18-(24)</b>	0%	0
<b>24-30</b>	20%	1
<b>Total</b>	100%	5
<b>Mean</b>		12.6

**(c) What percentage of lectures did you attend?**



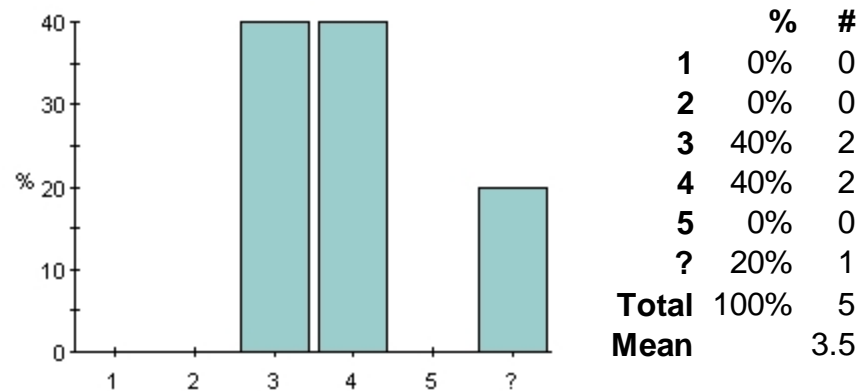
### 6. Reading list

(a) How much of the required readings on the reading list have you read?



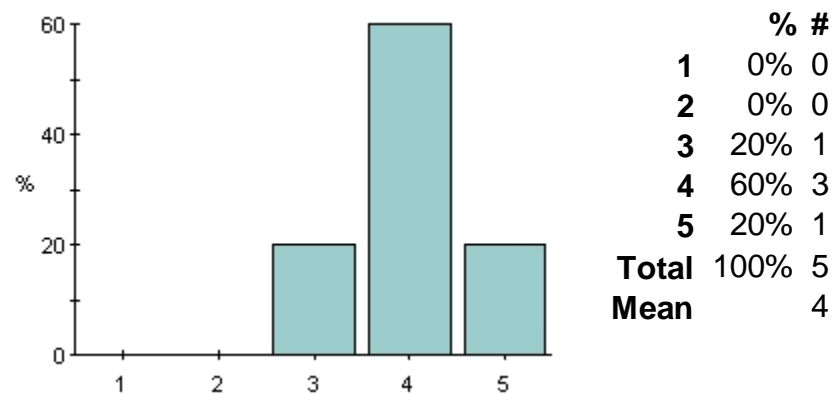
1 = none  
 3 = about half  
 5 = all

(b) How would you rate the books recommended for this course?



1 = not useful  
 3 = fairly useful  
 5 = very useful

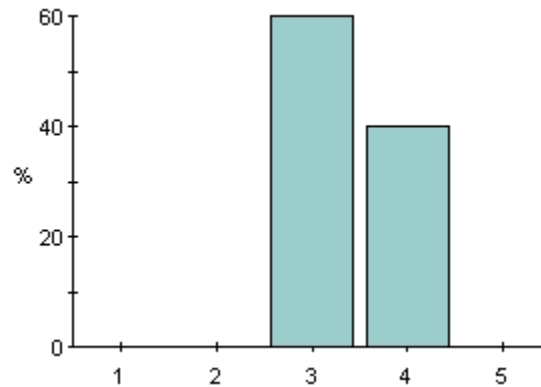
**(c) How would you rate the articles recommended for this course?**



1 = not useful  
 3 = fairly useful  
 5 = very useful

**(d) Other comments/suggestions about the course literature/reading list:**

Nobody has answered this question

**7. General judgment: how would you rate this course as a whole?**

	%	#
<b>1</b>	0%	0
<b>2</b>	0%	0
<b>3</b>	60%	3
<b>4</b>	40%	2
<b>5</b>	0%	0
<b>Total</b>	<b>100%</b>	<b>5</b>
<b>Mean</b>		<b>3.4</b>

1 = poor  
 3 = average  
 5 = excellent

---

Question 8: here you may leave additional comments or suggestions for improving the course. For example, if you want to comment on the exam or examination method, please do so here. If you decided to quit the course and would like to say why, this is the right place to do so.

**8. Other comments or suggestions:**

Nobody has answered this question

---

**Contact person:** Eric Sjöberg, [eric.sjoberg@ne.su.se](mailto:eric.sjoberg@ne.su.se)

**Last modified:** 12/02/10